

A Move-in Ready Home With Added Value

From **RM 350k\***

**EASY  
MOVE IN  
PACKAGE**



**Built-in  
Kitchen Cabinet**



**Wardrobes  
In All Bedrooms**

\*Terms and conditions apply

# PALMYRA RESIDENCE @ KL SOUTH



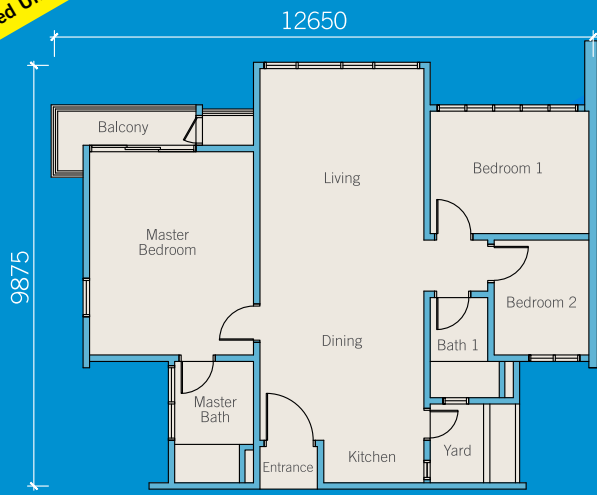
Over here, the indoor and outdoor spaces have been integrated to offer seamlessly designed landscapes. Experience Palmyra's distinctive environment the moment you step into its entrance courtyard.

Palmyra Residence comes with practical living spaces with layouts that spell comfort. It's the ideal setup for young urbanites or starter families.

- Garden Terrace • Play Podium • Inviting Lap Pool • Children's Pool

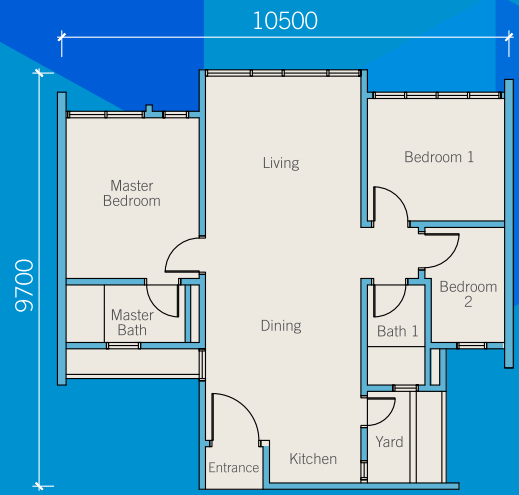


Limited Units



### Type A / A1

Built-up: 1,066 SF. • 3 bedrooms, 2 bathrooms

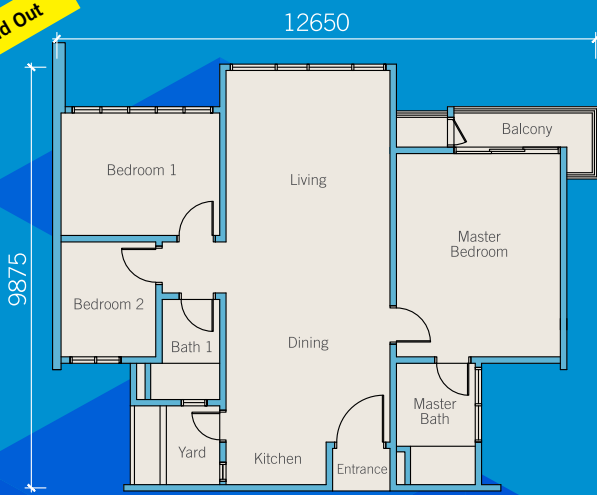


### Type B / B1

Built-up: 893 SF. • 3 bedrooms, 2 bathrooms

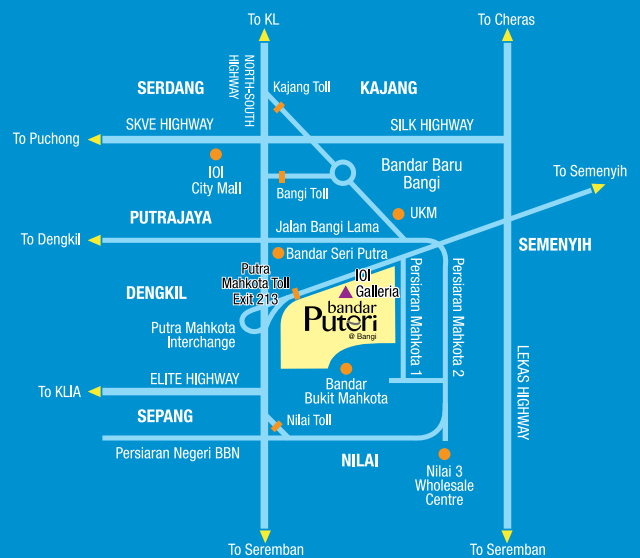


Sold Out



### Type C

Built-up: 1,066 SF. • 3 bedrooms, 2 bathrooms



GPS Coordinates: 2.882974,101.791037

IOI Galleria @ Bangi

A TOWNSHIP DEVELOPED BY IOI Properties Group Berhad

DEVELOPER Knowledge Vision Sdn. Bhd. (1027577-P) (A Subsidiary Company of IOI Properties Group Bhd)

MARKETING & SALES OFFICE IOI Galleria @ Bangi 1, Laman Puteri 2, Bandar Puteri Bangi, 43000 Kajang, Selangor.

03 8912 3333 ioiproperties.com.my/palmyra

Sales Gallery Open Daily 10 am - 5 pm

bandar Puteri @ Bangi

IOI PROPERTIES Trusted.

The information contained herein is subject to change without notification as may be required by the relevant authorities or developer's project consultant. Whilst every care is taken in providing this information, the owner, developer and managers cannot be held responsible for any variations. For avoidance of doubt, please refer to the sale and purchase agreement. Copyright IOI Properties Group Bhd. All rights reserved. All materials, content and forms contained herein are the intellectual property of IOI Properties Group Bhd and may not be copied, reproduced, distributed or displayed without IOI Properties Group Bhd's express written permission.